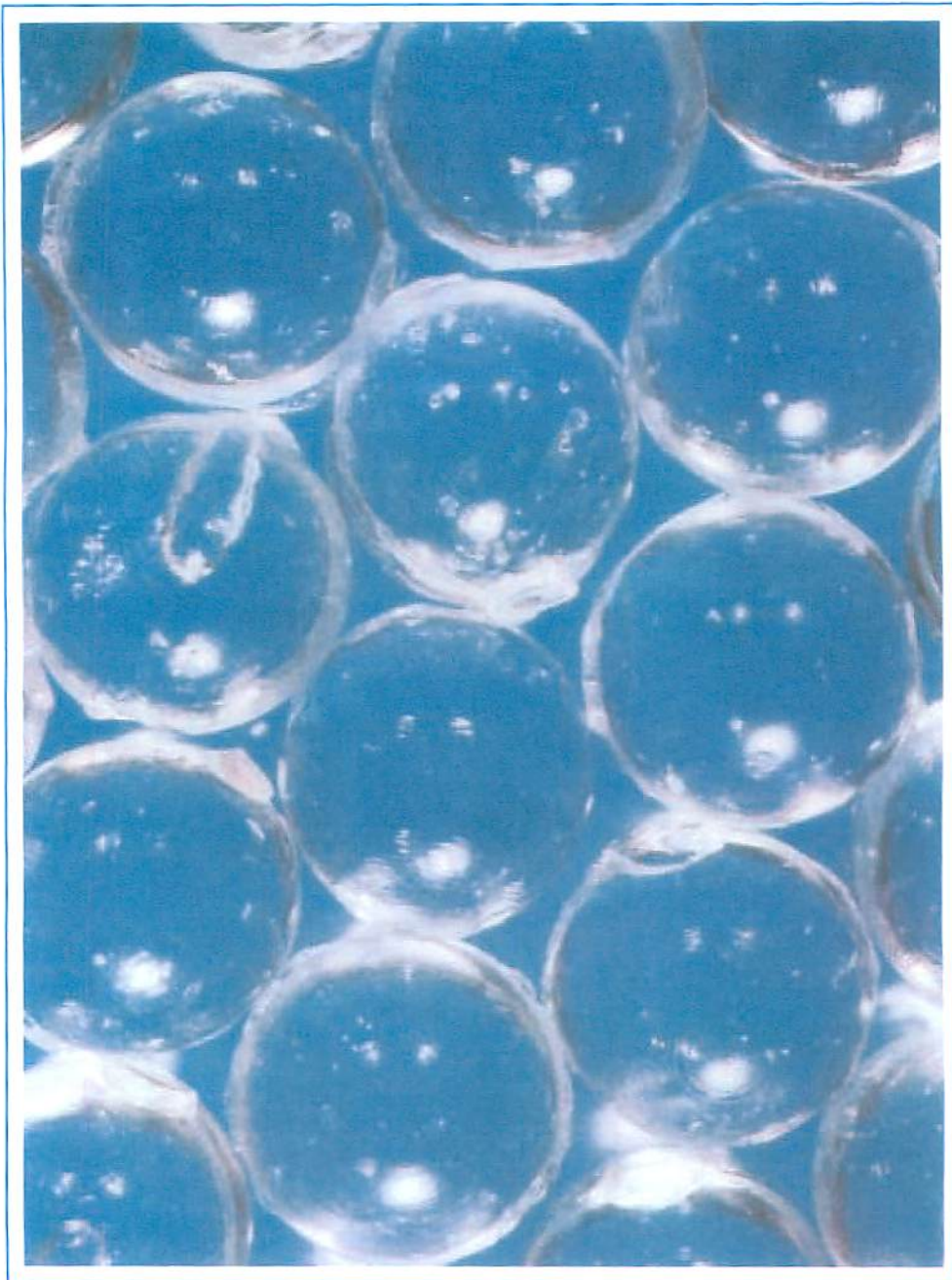


# Siliphos<sup>®</sup>



**The economical way to protect water systems against scale and corrosion**



**protects** water systems in hotels, public buildings, private households and industry against scale formation and corrosion.

**prevents** 'brown' water and clogged pipes

**saves** expensive repairs or even replacement of water pipes, boilers, heaters, cooling systems etc.

**helps** to save energy

**extends** the life of your water installation.

## What is SILIPHOS?

SILIPHOS is an economic and reliable water treatment system for **potable** and **industrial** water. It consists of glass-like polyphosphate silicate spheres and dispensers of variable size.

SILIPHOS prevents scale and stops corrosion. It utilizes the phenomenon that minute concentrations of polyphosphates are sufficient to inhibit the deposition of scale onto metallic surfaces. Because of its phosphate and silicate content SILIPHOS also inhibits corrosion by forming a thin protective layer on the metal surface. A SILIPHOS concentration of 2 - 3 ppm is sufficient to achieve both of these effects.

SILIPHOS will also slowly remove existing scale in old pipes if it consists of brown scale, i.e. ironoxide.

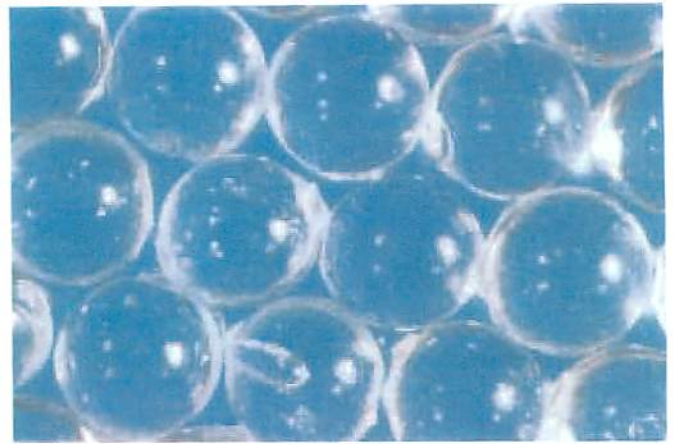
Hard scale, i.e. calcium carbonate cannot so easily be removed by SILIPHOS. Here the advantage is again that SILIPHOS will prevent further scaling up.

Experience shows that scale and corrosion is not only found in galvanized but also in copper pipes (see picture on page 3). Even in plastic pipes one can find scale and deposits.

As a rule of thumb one can say that 1mm scale on the heating coils of a boiler, increases the energy cost by 15%.

SILIPHOS consists of 100% active substance. The use in tap water and other types of fresh water at the prescribed dosage is inoffensive. The components of SILIPHOS comply with FAO/WHO standards.

**Soft waters** are aggressive to metals and cause corrosion. Consequently the tap water turns brown. Leaks and burst pipes may be the result.



SILIPHOS-spheres, original size

## SILIPHOS Dispensers

SILIPHOS dispensers can be installed in almost every water system. They require no electric installation and hardly any maintenance. They only have to be refilled with spheres every 3 - 6 months.

Refilling is very easy and a complete change of SILIPHOS is recommended every 12 months.

## The SILIPHOS System:

### 1. SILIPHOS Spheres

A sparingly soluble glass - like polyphosphate silicate combination of highest purity.

### 2. SILIPHOS Dispensers

The dispensers are installed in the water system and filled with the SILIPHOS Spheres. The tap water flows through the dispenser and dissolves minute quantities of polyphosphates. SILIPHOS dispensers don't cause a critical pressure drop in the water mains.

SILIPHOS DISPENSERS should be refilled when 1/3 of the content is used up, normally only after appr. 3 - 6 months, this depends on the individual installation.

SILIPHOS SYSTEMS have been installed with great success in private houses, hotels, office buildings, schools and hospitals for the treatment of potable water. They are also applied in small and medium sized industrial estates for the treatment of cooling systems, autoclaves, machine cooling etc.



# Siliphos<sup>®</sup>

## What can SILIPHOS do for you?

Most natural waters cause damage in pipes, boilers and other installations. Some contain dissolved minerals, mainly calcium and magnesium salts. Such waters are referred to as being hard.

**Hard waters** form scale in pipes and boilers. This leads to decrease in water pressure and an increased energy demand. Clogged pipes may have to be replaced. Heating coils may overheat and fail.



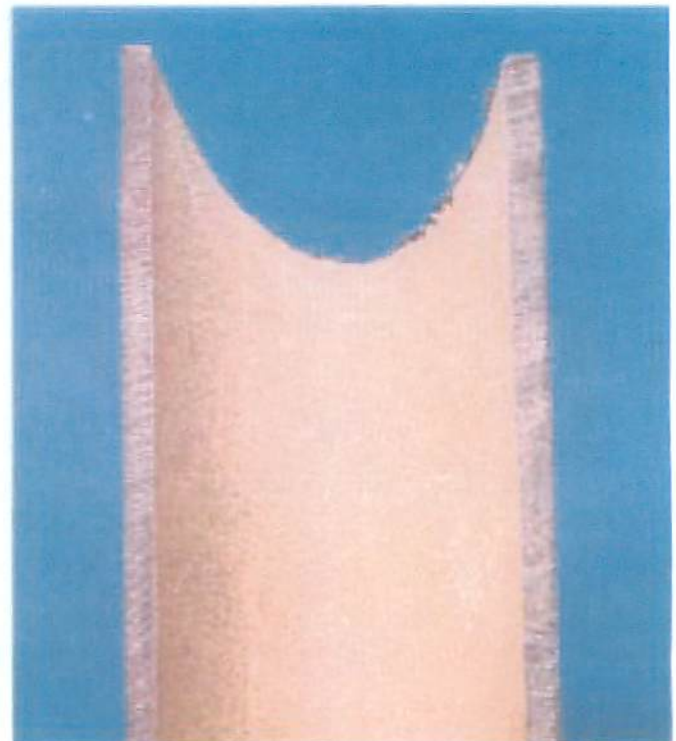
Copper pipe with scale plug



Galvanized pipe heavily scaled



Galvanized pipe heavily corroded



SILIPHOS<sup>®</sup> protective layer

## SILIPHOS FOR WATER TREATMENT

- 1) What is Siliphos?

Siliphos is a water treatment compound, a glass-like Polyphosphate containing Sodium, Calcium Magnesium and Silicate, formulated specifically for the treatment of water problems. It is shaped into unique spheres and packed in 25 kg cartons or 50 kg PE-drums.
  
- 2) What will Siliphos do?

Basically it will do four things:  
It will prevent so-called 'brown' or 'red' water;  
It will stop corrosions of plumbing and bathroom fixtures;  
It will eliminate hardness scaling;  
It will save you considerable costs on plumbing and installation repairs;
  
- 3) Does Siliphos remove hardness and iron from water?

No, it is known as a sequestering agent. That is, it "ties up" hardness and renders it harmless. It prevents the formation of brown water caused by oxidation of the iron pipes.
  
- 4) How does Siliphos prevent corrosion?

It forms a thin protective layer on the inside of pipes and metal parts. This film or layer is microscopic in thickness and will not build-up with time.
  
- 5) Is this compound dangerous or harmful to use?

No. All components used in Siliphos are 100% pure food grade materials.
  
- 6) Will Siliphos change the taste of water?

No. It is colourless, tasteless and odourless in the concentrations recommended for treatment. Coffee and tea might even taste better.
  
- 7) How is Siliphos added to a water system?

A dispenser is the most reliable, accurate and economical method of feeding it.
  
- 8) How much of Siliphos should be used?

The installation being protected must get 3 - 5 g Siliphos, that is 2 - 3 g  $P_2O_5$  in every cubic metre (220 UK gallons) of water.

# Cistermiser

Cistermiser Limited

Unit 1 • Woodley Park Estate • 59-69 Reading Road • Woodley • Reading • Berkshire RG5 3AN

Tel: 0118 969 1611 • Fax: 0118 944 1426 • Email: sales@cistermiser.co.uk • Web site: www.cistermiser.co.uk

